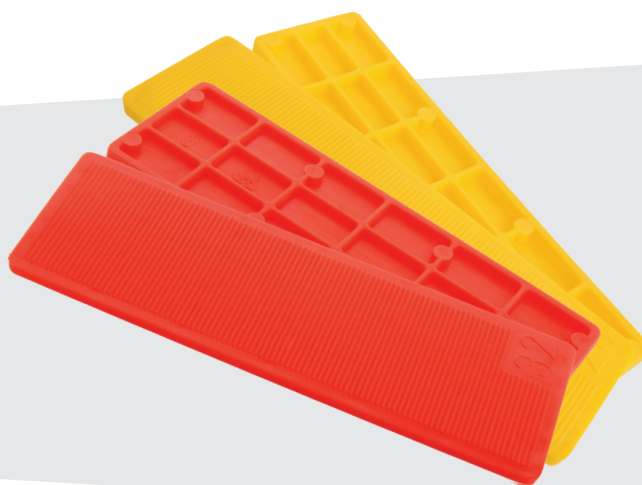


DISTANCE GLAZING BLOCKS



General information:

Distance Glazing Blocks are used for glazing wood, PVC and aluminum windows. Their task is to properly wedge the glass in the window frame. Distance Glazing Blocks are produced in different widths, which will allow to properly glaze both single windows as well as very wide insulating glass units

Available widths:

10 mm – 28 mm	30 mm – 44 mm	46 mm – 60 mm
10 mm	30 mm	46 mm
15 mm	32 mm	47 mm
20 mm	34 mm	48 mm
22 mm	36 mm	50 mm
24 mm	40 mm	52 mm
26 mm	42 mm	56 mm
28 mm	44 mm	60 mm

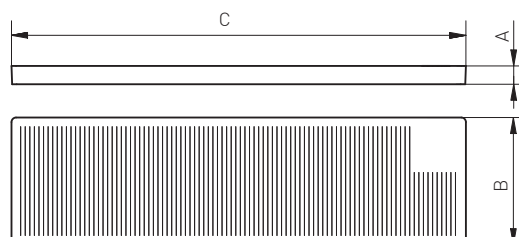
Available thicknesses:

Width	Colour
1 mm	
2 mm	
3 mm	
4 mm	
5 mm	
6 mm	
7 mm	
8 mm	

Material:

PP

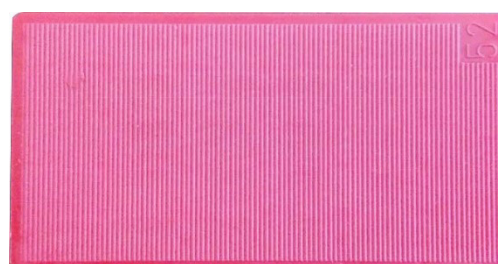
Drawing:



Bottom side



Upper side



Displacement levels and required class of load

Product	Displacement levels for compression load [mm]	Loading class [kN]
Distance glazing block length 100 mm	0,4	10

The uncertainty of the measurement is for a confidence level of 95 % and uncertainty factor 2,78 (n=5 tests in series) given in test tables below

Compression load for distance glazing blocks 100x33

Thickness of the washer	Displacement level	Compression load	Average compression load with uncertainty of the measurement	Calculate class of load*
[mm]	[mm]	[kN]	[kN]	[kN]
3	0,4	32,54	33,28±0,30	10
		32,12		
		32,40		
		32,26		
		37,07		
4	0,4	21,68	22,05±0,75	10
		21,37		
		20,31		
		21,22		
		25,69		
5	0,4	20,33	20,56±0,54	10
		19,67		
		19,42		
		20,09		
		23,26		
6	0,4	21,79	22,65±0,23	10
		21,84		
		21,78		
		22,04		
		25,79		

Compression load for distance glazing blocks 100x44

Thickness of the washer	Displacement level	Compression load	Average compression load with uncertainty of the measurement	Calculate class of load*
[mm]	[mm]	[kN]	[kN]	[kN]
3	0,4	46,17	44,99±1,52	10
		43,88		
		46,01		
		46,57		
		42,31		
4	0,4	42,40	41,38±1,34	10
		40,41		
		42,29		
		42,79		
		39,03		
5	0,4	27,99	27,63±0,68	10
		28,68		
		27,53		
		28,53		
		25,45		
6	0,4	44,69	43,76±1,10	10
		42,96		
		44,45		
		44,84		
		41,86		

Compression load for distance glazing blocks 100x52

Thickness of the washer	Displacement level	Compression load	Average compression load with uncertainty of the measurement	Calculate class of load*
[mm]	[mm]	[kN]	[kN]	[kN]
3	0,4	36,03	35,22±0,69	10
		34,88		
		35,65		
		36,00		
		33,54		
4	0,4	28,26	28,33±1,39	10
		30,48		
		28,13		
		28,44		
		26,31		
5	0,4	32,85	31,87±1.15	10
		32,53		
		30,85		
		32,61		
		30,50		
6	0,4	36,95	36,17±0,94	10
		35,50		
		36,81		
		37,11		
		34,50		